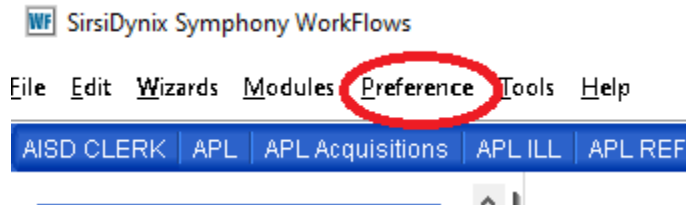


## Can't Open more than one Wizard at a time

If you can't open more than one Wizard at a time you need to set Multiple Windows Mode or Tabbed Windows.

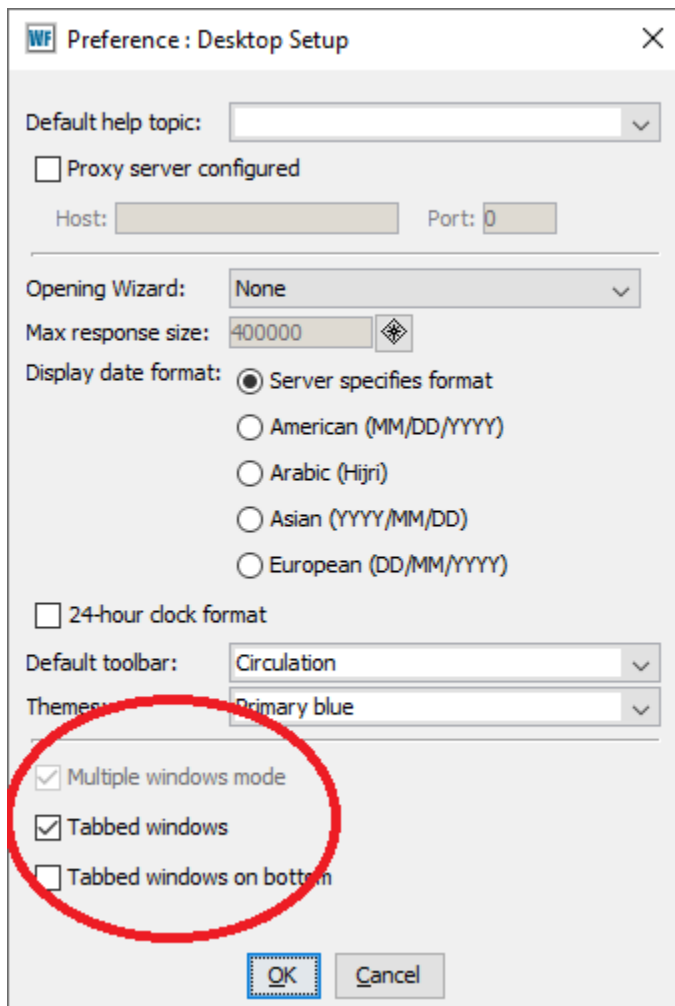
To select Multiple Windows Mode or Tabbed Windows  
Click on Preference



Click on Desktop

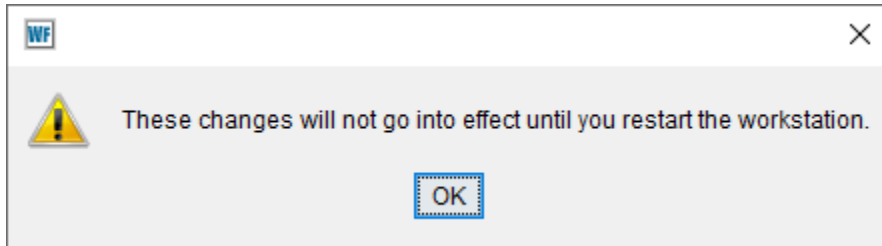
Click on Desktop Setup

At the bottom of the Preference box you will choose Multiple windows mode or Tabbed Windows



Click OK

You will receive the following message



Click OK

Log out of Workflows

Log back into Workflows

Your Wizards should be on the left side as usual